

# MONTHLY MEMBERSHIP PROGRESS REPORT

LOCATION NORTH DAKOTA

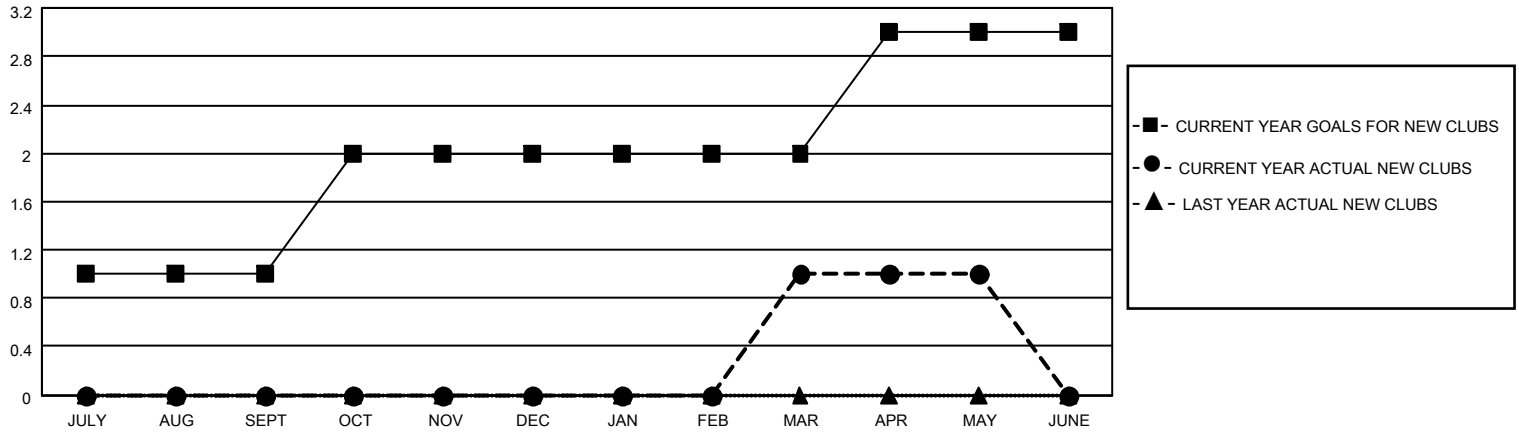
District 5 NW

Results as of: 5/31/2023

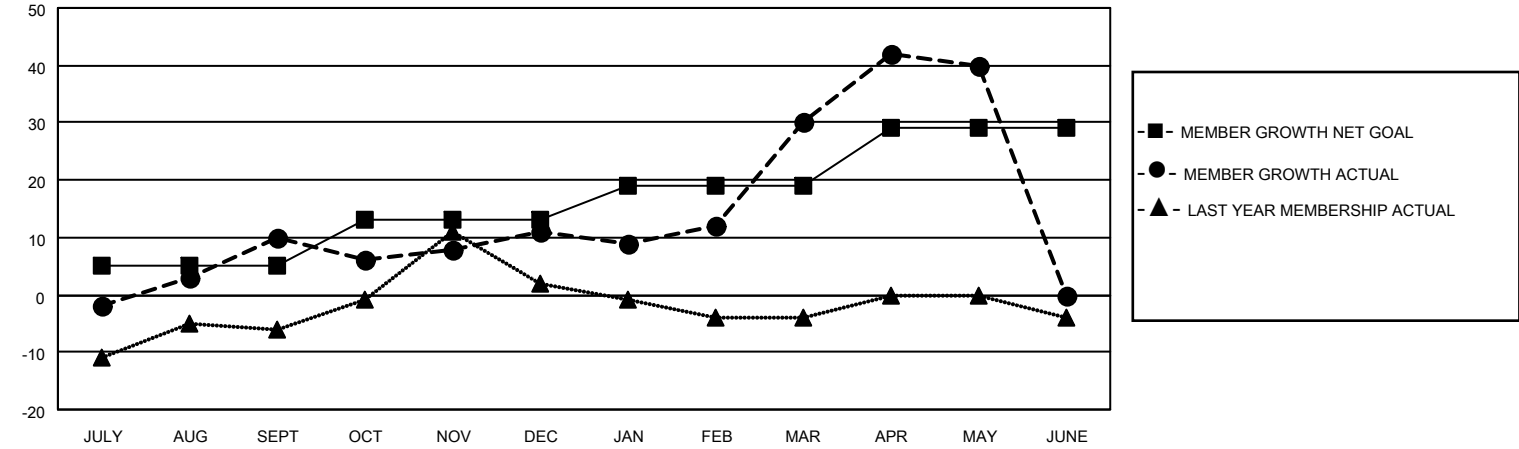
Clubs			
RESULTS FOR 2022-2023			
QUARTER	NEW CLUB GOAL	NEW CLUBS	DROPPED CLUBS
JULY/AUG/SEPT	1	0	0
OCT/NOV/DEC	1	0	0
JAN/FEB/MAR	0	1	0
APR/MAY/JUNE	1	0	0

Members			
RESULTS FOR 2022-2023			
QUARTER	MEMBER GROWTH NET GOAL	MEMBER GROWTH ACTUAL	DROPPED MEMBERS ACTUAL (including transfers)
JULY/AUG/SEPT	5	39	25
OCT/NOV/DEC	8	17	16
JAN/FEB/MAR	6	47	24
APR/MAY/JUNE	10	35	24

**GOALS AND ACTUAL NEW CLUBS CUMULATIVE**



**GOALS AND ACTUAL MEMBERS CUMULATIVE**



**DROPPED CLUBS: 0**

**27 CLUBS OF 43 ADDED 1 OR MORE NEW MEMBERS**

**GENDER DISTRIBUTION**

MALE	710 (60.89%)
FEMALE	456 (39.11%)
NON BINARY	0 (0.00%)
PREFER NOT TO ANSWER	0 (0.00%)

**DROPPED MEMBERS**

[CLICK HERE FOR CUMULATIVE MEMBERSHIP DATA](#)

DECEASED	13
CLUB CANCELLED	0
OTHER	76
<b>TOTAL</b>	<b>89</b>

TOTAL FAMILY UNIT MEMBERS 218

FAMILY MEMBERS PAYING HALF DUES 110